

Weekly Service Review

Monday, March 3, 2008

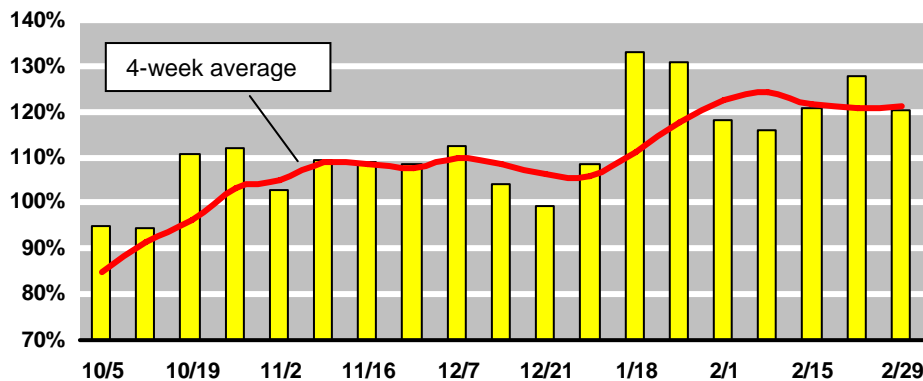


Pineloch Elementary School
3101 Woods Avenue
Orlando, FL 32805

Dr. Janice R. Choice, Principal
Ms. Bernadette Jaster, Assistant Principal

Pineloch Elementary School's *Weekly Service Index* closed the school week off -7.3 points to finish at the 120.3 level on Friday. This means that as a group, Dr. Choice's weekly performance indicators managed to reach 120.3% of their goals (chart below).

Percent-of-goal achieved, 16 weekly indicators



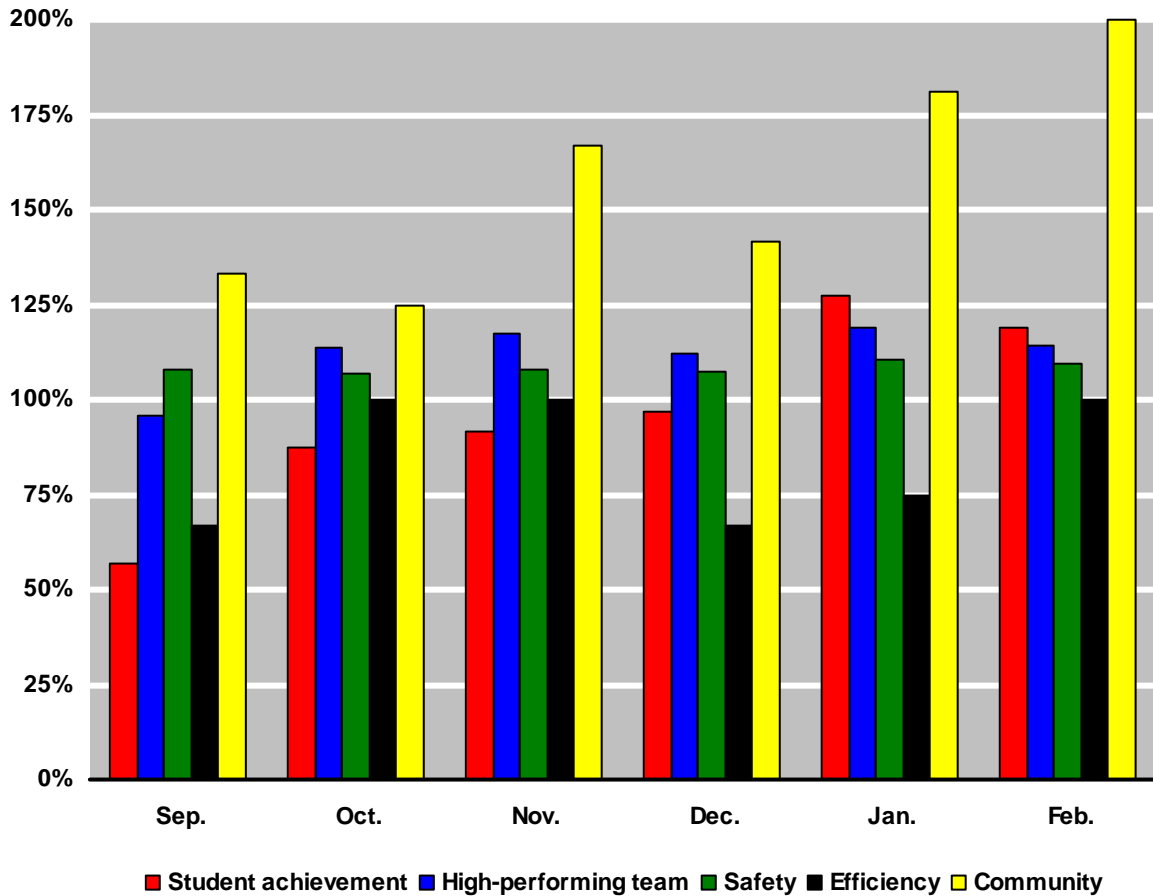
FEBRUARY

For the month, Pineloch Elementary's weekly service indicators averaged 120.2% of plan. That represents a very strong month. As the chart on page two provides, each of the five strategic OCPS "goal categories" finished at +100% of goal for the month. As the FCAT testing continues in only six school days, the timing could not be more perfect.

The table on the last page reveals three indicators that did come in at less than 85% of plan this month...this is why three *Accelerated Reader* indexes are shaded in red (grades 2nd through 4th). However, at least the 3rd and 4th grades did manage to reach at least 81.5% of goal for the month.

With the exception of the three *Accelerated Reader* measures, every other one of Dr. Choice's indicators reached the 90% level or better in terms of goal achievement. As far as the month February went, the staff made it to school, leadership was visible in the classrooms, the safety patrols were on station, the custodial team kept unplanned expenditures in check and the business partners were kept in the loop. Well done.

Monthly goal achievement by strategic category



How to read the chart: The chart is read as the percent-of-goal achieved for each one of the school's short-run performance indicators as well as for the combined group. The reason that progress over the past four weeks is spotlighted here is that the majority of the annual FCAT testing process is now within range (March 11). Results over recent weeks prove a better indicator of current efforts and focus than those from earlier this past fall.

Pineloch Weekly Service Indicator	Goal	29-Feb	Index	4 Weeks	Index	Cumul.	Index
Intense Focus - Student Achievement							
A/R: tests taken & passed @ 80% (2nd)	60	47	78.3	45	74.6	49	81.0
A/R: tests taken & passed @ 80% (3rd)	60	57	95.0	50	83.8	49	82.4
A/R: tests taken & passed @ 80% (4th)	50	37	74.0	41	81.5	37	73.1
A/R: tests taken & passed @ 80% (5th)	50	85	170.0	78	155.0	51	101.7
Read Alouds (K-2)	40	48	120.0	48	120.0	33	81.4
Journal writing (Pre K-5)	40	86	200.0	86	200.0	58	144.6
High-performing & Dedicated Team							
Team meetings	10	7	70.0	9	90.0	9.2	92.4
Instructional staff attendance	90%	93.9%	104.3	94.5%	105.0	95.6%	106.3
Custodial staff attendance	90%	88.0%	97.8	93.0%	103.3	95.4%	106.0
Cafeteria staff attendance	90%	100.0%	111.1	98.4%	109.4	96.7%	107.4
Para-professional attendance	90%	87.7%	97.4	86.5%	96.2	94.1%	104.5
Clerical staff attendance	90%	95.0%	105.6	85.0%	94.4	93.6%	104.0
Classroom walk-throughs	20	38	190.0	44	200.0	33	164.3
Safe Learning & Working Environment							
Safety Patrols on duty	90%	100.0%	111.1	98.8%	109.7	97.5%	108.3
Efficient Operations							
Emergency purchases (custodial)	0	0	100.0	0	100.0	0.15	86.4
Sustained Community Engagement							
Partner-in-Education (PIE) contacts	4	10	200.0	9	200.0	6.8	170.2
Service Index	85 to 110		120.3		120.2		107.1

How to read the table: The indexes are read as percent-of-goal achieved whereby 100.0 equals exact-to-goal. Principal Choice established these weekly measures last summer as method for tracking progress against the school's strategic goals during the year. If any indicator has its index shaded in red, then it is performing at less than 85% of goal for that time period. Over time, Pineloch's five-day service indicators should be falling inside the 85.0 to 110.0 range (shaded in yellow).

Thank you to our 2007-08 Partners-in-Education: BellSouth Communications, BPOELKS Fraternal Organization, Callahan Neighborhood Association Foster Grandparent Program, Head Start, Junior Achievement, Les'al Plant Center, Mount Pleasant Missionary Baptist Church, Orange County Headstart, *The Orlando Times*, Pinecrest Estates Neighborhood Association, Pineloch Elementary PTA, St. Luke's United Methodist Church, Washington Mutual Bank and Woodruff & Woodruff Educational Training and Consulting.

Credit: Results compiled and transmitted courtesy of Ms. Tammy L. Dawson. *Thank you for your continued efforts!*