

# Weekly Service Review

Monday, January 7, 2008

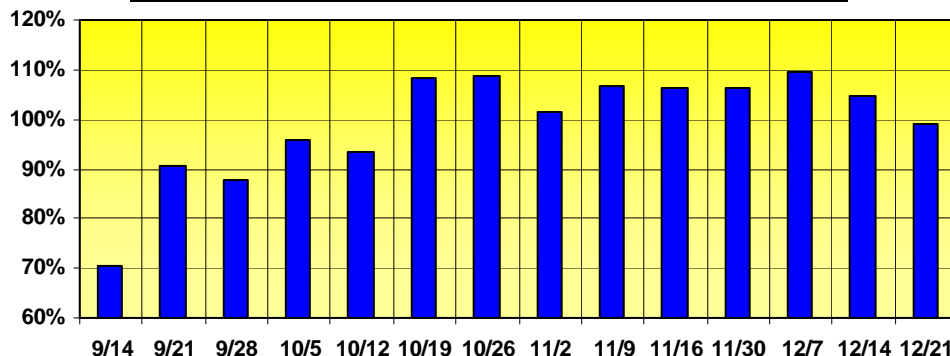


**Pineloch Elementary School**  
3101 Woods Avenue  
Orlando, FL 32805

**Dr. Janice R. Choice, Principal**  
**Ms. Bernadette Jaster, Assistant Principal**

Pineloch Elementary School's *Weekly Service Index* closed out the final school week of 2007 with a reading of 99.1 points. This means that the school's 16 short-range performance indicators collectively achieved 99.1% of their goals (chart follows).

## THE BIG PICTURE: Percent-of-goal achieved - all indicators (2007 = 100.5%)



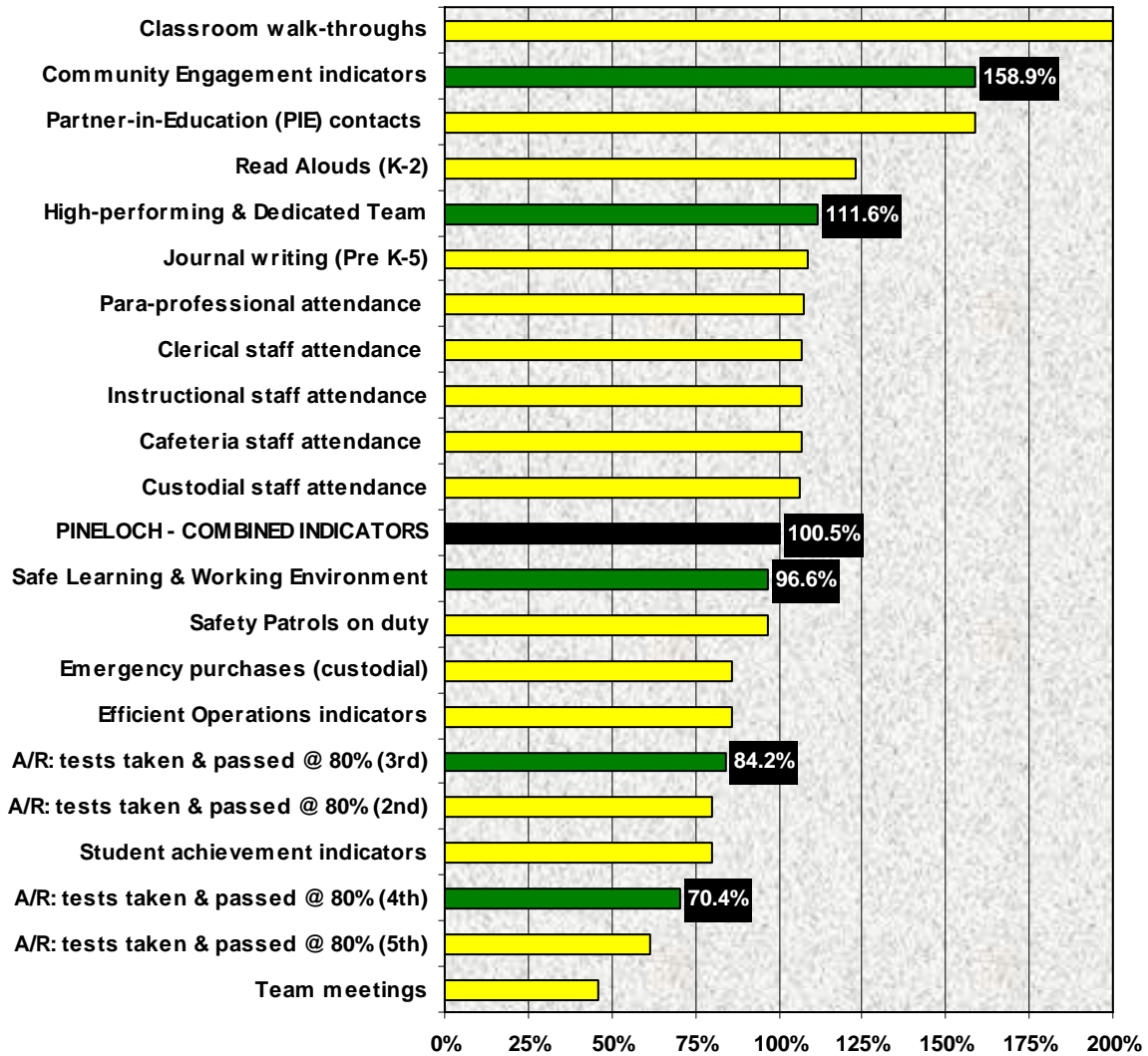
## OVERVIEW - 2007

The chart on page two illustrates actual results vs. goal for each of Pineloch's weekly service indicators. Through December 21<sup>st</sup>, performance ranged from a low of 46% of goal for team meetings to a high of 200% for classroom walk-throughs by the leadership team. As a group, these 16 weekly indicators have averaged 100.5% of plan for 2007. With the exception of this past week, not since mid October has the school's combined indicators fallen less than 100% of plan (chart above).

Headed into 2008, Pineloch has six individual indicators that are performing at less than 85% of plan using the new goals set out in December by Dr. Choice: 1) all four grades with respect to their *Accelerated Reader (A/R)* results; 2) *K-2 Read Alouds*; and 3) *grade level team meetings conducted*. The A/R results have suppressed the year-to-date *Student Achievement category* (81% of plan through December 21<sup>st</sup>), but over the most recent four reporting periods have done much better. In fact, over the final four weeks of 2007 Pineloch's six *Student Achievement indicators* have averaged 98% of plan...quite an improvement vs. the year-to-date figure.

Good luck in 2008!

## How Pineloch's Short-range Indicators Fared in 2007 (Actual results vs. goal)



Note: The percentages appearing in the chart above can be verified by inspection of the indexes in the far right column of the table on page three. The indexes are interpreted as percent-of-goal achieved whereby 100.0 points is exact-to-goal. A/R stands for the *Accelerated Reader* program.

Pineloch Weekly Service Indicator	Goal	21-Dec	Index	4 Weeks	Index	Cumul.	Index
<b>Intense Focus - Student Achievement</b>							
A/R: tests taken & passed @ 80% (2nd)	60	60	100.0	65	108.3	48	80.2
A/R: tests taken & passed @ 80% (3rd)	60	67	111.7	69	114.6	51	84.2
A/R: tests taken & passed @ 80% (4th)	50	43	86.0	42	83.5	35	70.4
A/R: tests taken & passed @ 80% (5th)	50	56	112.0	55	110.5	40	79.9
Read Alouds (K-2)	40	25	62.5	25	62.5	25	61.4
Journal writing (Pre K-5)	40	44	110.0	44	110.0	44	108.8
<b>High-performing &amp; Dedicated Team</b>							
Team meetings	20	8	40.0	9.3	46.3	9	46.1
Instructional staff attendance	90%	98.1%	109.0	95.9%	106.5	96.2%	106.9
Custodial staff attendance	90%	100.0%	111.1	98.0%	108.9	95.8%	106.5
Cafeteria staff attendance	90%	100.0%	111.1	100.0%	111.1	96.2%	106.8
Para-professional attendance	90%	98.5%	109.4	96.1%	106.8	96.8%	107.6
Clerical staff attendance	90%	90.0%	100.0	97.5%	108.3	96.3%	106.9
Classroom walk-throughs	10	30	200.0	32	200.0	28	200.0
<b>Safe Learning &amp; Working Environment</b>							
Safety Patrols on duty	100%	97.8%	97.8	95.9%	95.9	96.6%	96.6
<b>Efficient Operations</b>							
Emergency purchases (custodial)	0	1	0.0	0.25	0.0	0.14	86.0
<b>Sustained Community Engagement</b>							
Partner-in-Education (PIE) contacts	4	5	125.0	5.8	143.8	6	158.9
<b>Service Index (CHART)</b>	<b>85 to 110</b>		<b>99.1</b>		<b>101.1</b>		<b>100.5</b>

How to read the table: The indexes are read as percent-of-goal achieved whereby 100.0 equals exact-to-goal. Principal Choice established these weekly measures last summer as method for tracking progress against the school's strategic goals during the year. If any indicator has its index shaded in red, then it is performing at less than 85% of goal for that time period. Over time, Pineloch's five-day service indicators should be falling inside the 85.0 to 110.0 range (yellow zone).

Thank you to our 2007-08 Partners-in-Education: BPOELKS Fraternal Organization, Callahan Neighborhood Association Foster Grandparent Program, Junior Achievement, Les'al Plant Center, Mount Pleasant Missionary Baptist Church, Orange County Headstart, *The Orlando Times*, Pinecrest Estates Neighborhood Association, Pineloch Elementary PTA, St. Luke's United Methodist Church, Washington Mutual Bank and Woodruff & Woodruff Electrical Consulting.

Credit: Results compiled and transmitted courtesy of Ms. Tammy L. Dawson. *Thank you for your continued efforts!*